

# Tube for PF6 / PD12 / FP50/ FPC50

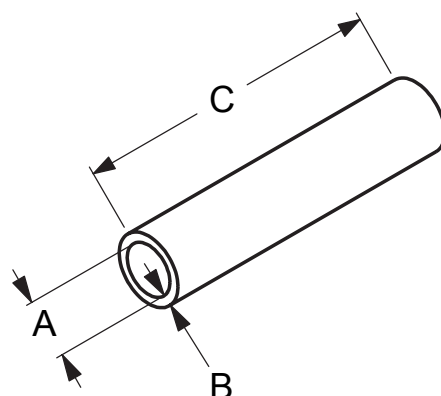
**WATSON  
MARLOW**  
Flexicon

Sales manual

Rev.: 04

28.10.2009

AEF



Part number	Description	A (ID) (mm)	B (wall thickness) (mm)	C (length) (m)
84-301-005	Silicone tube	0.5	1.6	5
84-301-008	Silicone tube	0.8	1.6	5
84-301-012	Silicone tube	1.2	1.6	5
84-301-016	Silicone tube	1.6	1.6	5
84-301-032	Silicone tube	3.2	1.6	5
84-301-048	Silicone tube	4.8	2.0	5
84-301-060	Silicone tube	6.0	2.0	5
84-301-080	Silicone tube	8.0	2.0	5
84-311-008	Silicone tube	0.8	1.6	25
84-311-016	Silicone tube	1.6	1.6	25
84-311-032	Silicone tube	3.2	1.6	25
84-311-048	Silicone tube	4.8	2.0	25
84-311-060	Silicone tube	6.0	2.0	25
84-311-080	Silicone tube	8.0	2.0	25
84-102-005	Silicone/platinum tube	0.5	1.6	10
84-102-008	Silicone/platinum tube	0.8	1.6	10
84-102-012	Silicone/platinum tube	1.2	1.6	10
84-102-016	Silicone/platinum tube	1.6	1.6	10
84-102-032	Silicone/platinum tube	3.2	1.8	10
84-102-048	Silicone/platinum tube	4.8	2.0	10
84-102-060	Silicone/platinum tube	6.0	2.1	10
84-102-080	Silicone/platinum tube	8.0	2.2	10
84-105-008	Pharmed tube	0.8	1.6	1
84-105-016	Pharmed tube	1.6	1.6	1
84-105-032	Pharmed tube (32-152-100)	3.2	1.6	1
84-105-048	Pharmed tube (32-152-101)	4.8	1.6	1
84-105-060	Pharmed tube (32-152-102)	6.0	1.6	1
84-105-080	Pharmed tube (32-152-103)	8.0	1.6	1
84-301-200	Set of silicone tube from 84-301-005 to 84-301-080			

- Material certificate is supplied with all tubes, except for the pharmed tubes.

- Tube locks for 3.2 – 4.8 – 6.0 and 8.0 pharmed tubing are not supplied together with the peristaltic dispenser. Part numbers for tube locks are mentioned in the brackets.